

51st European  
International Farm Youth Exchange  
Alumni Association Conference



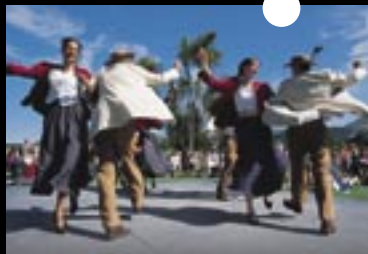
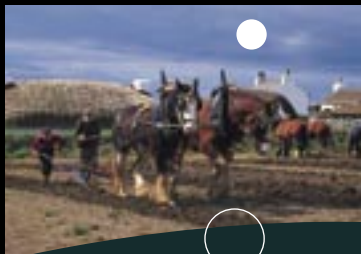
KING WILLIAM'S COLLEGE, CASTLETOWN

# ISLE OF MAN

---

4th - 11th July 2009

*Faillt erriu... Welcome!*





## 51st European IFYE Conference - Isle of Man 2009



# ITINERARY

## Saturday 4<sup>th</sup> July 2009

3.00pm	Delegates commence arrival – Registration open in Barrovian Hall
4.00pm	IFYE Board Meeting
6.30pm	Evening Meal - Bar open in Barrovian Hall
7.00pm	DVD of Isle of Man and Photos of Swiss 50th European Conference
9.00pm	Fancy Dress Evening – Viking Theme - Big School
1.30am	Bar closes

---

## KING WILLIAMS COLLEGE TRIVIA

- The school was named after King William IV who is said to have offered the founders “my most valuable possession, my name” when asked for a financial contribution.
- The school features, thinly disguised, in the Victorian schoolboy book Eric, or, Little by Little by Dean Farrar who had been a student at the school.
- Since 1904, the College has set an annual general knowledge test. It is well-known to be highly difficult, a common score being just two correct answers from the list of several hundred. Traditionally, the best scorers were given a half day free from school, while anyone doing particularly badly was given a detention. The quiz is popular with non-pupils, and has been published in The Guardian newspaper since 1951

---

## Sunday 5<sup>th</sup> July 2009

8.00am – 9.00am	Breakfast – Barrovian Hall
9.15am – 11.00am	Church Service and Opening Ceremony in College Chapel
11.00am -11.30am	Coffee in Barrovian Hall
11.30am -12.30pm	Group and Country Photos – Cricket Pavilion
12.30pm	Traditional Sunday Lunch
2.00pm	Coach departs to the Nunnery for Tynwald Garden Party, where we will be Guests of the President and Members of Tynwald – National Dress/Formal attire to be worn
5.00pm	Coach departs to King William’s College
5.30pm	Baby IFYEs Meeting
6.00pm	Bar opens in Big School
6.30pm – 7.30pm	Contact Members Meeting
7.30pm	Evening Buffet Meal – Barrovian Hall
9.00pm	Entertainment by Isle of Man Young Farmers – Big School



## THE NUNNERY

- The Nunnery is the location for Sunday's Tynwald Garden Party. Located just outside Douglas, the Nunnery is named after a religious foundation on the site. The Priory of Douglas was a Cistercian foundation, possibly dating from the 12th century and known to have been in existence by 1313 when it was visited by Robert Bruce. Its Prioress was an important Baron in the island, holding her own courts. The Priory was suppressed by Henry VIII in 1540.
- The buildings were acquired by Richard Calcot who is said to have married the ex-Prioress. The family occupied a house on the site before selling it to the Taubmans in 1776. A new house was built for John Taubman in 1823 in the Strawberry Hill Gothic style.
- The estate became the Isle of Man International Business School in 1999 and recently became the Isle of Man University College.
- The Nunnery is frequently used as a film location. William Baldwin and Julie Andrews filmed here for Relative Values whilst it also recently appeared in British hit Stormbreaker as Darius Sayle's mansion.

---

## TYNWALD - THE WORLDS OLDEST CONTINUOUS PARLIAMENT

- The Isle of Man is not part of the United Kingdom nor a Member of the European Union It is a British Crown Dependency, which has its own Laws, Courts, and Government.
- Tynwald is the name of the Isle of Man Parliament, is over 1000 years old and believed to be the oldest continuous Parliament in the world. Started in Viking times, Tynwald was an open-air meeting at midsummer. There, Islanders could come and hear the laws, seek justice, or speak their thoughts. This tradition continued throughout the Viking period, which lasted from 979 AD to 1266 AD, then passed on through Scottish, English and ultimately British influence.
- The Lieutenant Governor is the British Crown representative on the Isle of Man.
- There are three branches to the Tynwald Parliament, the House of Keys, the Legislative Council and Tynwald. Separately the House of Keys and Legislative Council will consider Bills, which can be passed into law with a majority vote from each Branch. When these two Branches meet together in the Tynwald Chamber; they form the High Court of Tynwald. Tynwald determines Policy, Finance and scrutinizes Executive Government.
- The Branches of Tynwald may take laws passed in the UK to be considered for the Island or amend them to make them relevant to the Isle of Man, or enact specific laws for the Island.
- One notable difference in the law between the UK and the Island is that you only need to be 16 to drive or vote in a General Election. In recent years the UK has followed the Island's lead in introducing 24 hour licensing and increasing the age to buy cigarettes from 16 to 18.



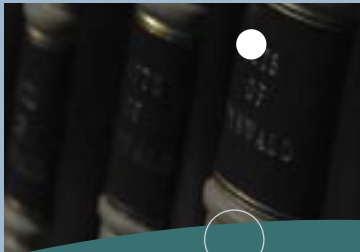
## Monday 6<sup>th</sup> July 2009

7.30am – 8.30am	Breakfast – Barrovian Hall
9.00am	Coaches depart for Tynwald Day Ceremony at St John's
10.00am	All seated on Grandstand
1.00pm	Lunch in Marquee at Ballaleece Farm, St John's Coach trips: <ul style="list-style-type: none"><li>• Cronk-y-Voddy Sports Day</li><li>• Isle of Man Churches Flower Festival - Visit to 3 to 4 Churches</li><li>• Visit to Peel – House of Manannan, Peel Castle, Viking Festival, and Life Boat House</li></ul>
5.30pm onwards	Fish and Chip Supper in Corrin Hall, Peel
7.30pm onwards	Country Meetings –at your various selected venues in Peel
9.30pm	Coaches depart Peel to St John's for "Beat Retreat" and Fireworks Display
11.00pm	Coaches Depart for King William's College
11.30pm – 1.30am	Bar open – Big School

---

## THE TYNWALD CEREMONY

- Tynwald Fair Day, held annually on old midsummer's day in July is the Isle of Man's National day and is the occasion of the Tynwald Midsummer Court. The Members of Tynwald - the Manx parliament - meet at St John's village in the west of the Island for the ceremony, a legal requirement established by the Island's ninth century rulers.
- The name comes from Thing-Vollr, - Norse for Parliament field.
- Tynwald Court, together with the Island's senior public office-holders, assembles on Tynwald Hill - a four-tiered hill in the centre of St John's, reputed to be constructed from sods of earth from the 17 Ancient Parishes. The open air sitting at Tynwald Hill dates back more than 1,000 years.
- During the ceremony, the Deemsters (the Isle of Man's High Court Judges) promulgate Acts of Tynwald by proclaiming to the people in English and Manx Gaelic the titles of new laws. It is also an opportunity for Island residents to exercise their ancient right to present a petition for redress of grievance at the foot of Tynwald Hill.
- In 2003 Her Majesty the Queen presided as Lord of Mann at the Midsummer Court of Tynwald.
- Aside from the formal proceedings, Tynwald Day has long been an occasion for the Manx people to gather and meet with friends and family at St John's. A traditional fair is still held, along with a day-long variety of entertainment including folk dancing and music, culminating with the Military band performing Beat Retreat followed by the Ellan Vannin Pipes and Drums on Tynwald Hill and a fireworks finale.
- Tynwald Day is always held on July 5th except if it falls at the weekend. Then, normally, it is moved to the following Monday. This year Tynwald Day takes place on Monday, July 7th.



## HOUSE OF MANANNAN

Using state-of-the-art display techniques, the House of Manannan explores the Celtic, Viking and Maritime traditions of the Isle of Man. Manannan is the Island's great mythological sea god and protector who could shroud the place with a cloak of mist to protect it from its enemies. As a shapeshifter, Manannan could appear in many guises and in his 'House' he acts as the visitor's guide - sometimes a god, sometimes a sailor or another form.

## PEEL CASTLE

Peel Castle is one of the Isle of Man's principal historic monuments. The importance of the Isle as a centre of Manx Christianity was established in the 6th century and this role was to survive the arrival of the 'pagan' Norse Vikings at the end of the 8th century. In the 11th century it became the ruling seat of the Norse Kingdom of Man and the Isles

---

### Tuesday 7<sup>th</sup> July 2009

7.45am- 8.45am	Breakfast in Barrovian Hall
9.15am	Coaches leave for Manx Museum, Douglas
12.30pm	Lunch at Barrool Suite, Legislative Buildings, Douglas
1.00pm	Tour around Tynwald/Legislative Buildings or at leisure in Douglas. Everyone to make their own way to Douglas Railway Station to arrive there no later than 4pm.
4.00pm	Steam Train departs from Douglas Railway Station to Castletown
6.00pm	Bar Open – Big School
6.30pm – 7.30pm	Contact Members Meeting
7.30pm	Traditional Manx Evening Meal in Barrovian Hall
8.30pm – 10.00pm	Manx Cultural Evening– Big School
1.30am	Bar closes

---

## THE MANX MUSEUM

The Manx Museum depicts the islands natural history, archaeology and social development. The facilities are designed to provide an exciting starting point to explore the riches of our unique Manx heritage throughout the Island and for the visitor to discover 'The Story of Mann'.

## ISLE OF MAN STEAM RAILWAY

Opened in 1874, this 3ft narrow gauge railway still runs with its original locomotives and carriages, through an ever changing countryside. At 15 and a half miles it is the longest narrow gauge steam line in Britain.



## Wednesday 8<sup>th</sup> July 2009

8.00am – 9.00am	Breakfast – Barrovian Hall
9.30am	Coaches depart for: <ul style="list-style-type: none"><li>• TT Course Tour - Commentary by ex TT Rider, Richard 'Milky' Quayle, and includes a visit to a Motor Cycle Museum and Dairy Farm tour</li><li>• Walking Tour – A stunning, beautiful scenic Coastal foot path walk from Port St Mary to Cregneash Folk Museum to Calf Sound</li><li>• Vintage Transport Tour- Manx Electric Railway trip from Douglas to historic village of Laxey, visit to the World's largest working water wheel – The Lady Isabella then continue by the electric tram to Ramsey Town, returning to Castletown in vintage coaches</li></ul>
6.00pm	Bar opens in Big School
6.30pm– 7.30pm	Country Meetings
7.30pm	Evening meal in Barrovian Hall
8.30pm	Tombola Draw followed by Austrian presentation of 2010 Conference in Big School
9.30pm	Traditional Manx Games Night in Big School – bring your Song Book too!
1.30am	Bar closes

---

## THE TOURIST TROPHY RACES (TT RACES) & THE TT COURSE

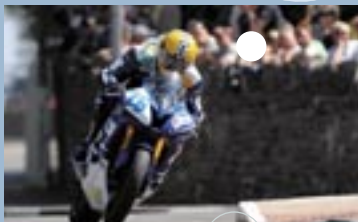
The way was paved for the TT by the Isle of Man's 1904 law allowing roads to close for the Gordon Bennett car trials. With road closure and speed limit laws preventing a much-wanted British motorcycle race on UK roads, the organiser, the Auto Cycle Club, turned to the Isle of Man and, in 1907, the TT was born.

For two weeks of every year the eyes of the world focus on the Isle of Man as the finest road racers on the planet pit their skills against the 37¼ miles of public roads that form the world famous TT Course. Often described as the 'ultimate test of man and machine', the Course is made up of over 220 bends and weaves its way through miles of countryside plus a number of towns and villages. Riders learn every inch of the Course and know every bump, jump and hazard. Most riders reach speeds of up to 200mph and lap the Course in just 17 - 18 minutes! 6 lap races can take up to 2 hours and include 2 pit stops - making the modern day Moto GP look like a walk in the park!

Up until the 1970's, the TT was the British round of the Grand Prix World Championship and the Isle of Man has played host to many of the greatest motorcycle racers in history including multiple World Champions Mike Hailwood, Giacomo Agostini and Carl Fogarty. Today the event still attracts the very best road racers and is faster than ever!

### RICHARD 'MILKY' QUAYLE

Richard 'Milky' Quayle is from the Isle of Man. He won one TT race in 2002 before retiring from racing the next year. Richard has also won 3 Manx Grand Prix - also held over the TT Course. Today Richard gives tuition and guidance to many of the top TT newcomers and he will share much of this insider information to you!



## WALKING & WILDLIFE

The stunning and varied landscape of the Isle of Man comprises austere moorland, lush valleys and wooded glens plus sandy beaches and rugged cliffs. One of the great appeals of the Isle of Man is that without too much effort you can see a wonderful variety of wildlife. Today's walk along the coast provides a great opportunity to spot the awesome Basking Shark - a common sight in Manx waters, plus the ever-present seals and a wide variety of sea birds.

## CREGNEASH FOLK MUSEUM

The National Folk Museum at Cregneash provides a living, working illustration of life in a typical 19th century Manx uplandcrofting community. Nestling under Meayll Hill and overlooking the Calf of Man, Cregneash is isolated from the rest of Mann and at the beginning of the 20th century was one of the last strongholds of the traditional customs, crafts and skills which characterised the Manx Crofter's way of life. It's well known for its use in the film comedy *Waking Ned* as the fictional Irish village Tullymore after the production company failed to find a village in Ireland that was Irish enough!

## THE MANX ELECTRIC RAILWAY

- The Manx Electric Tramway is a unique vintage railway aged over 100 years old.
- Open and closed tramcars takes passengers on an unforgettable journey along the east coast from Ramsey to Douglas, via Laxey. From the breathtaking heights of Bulgham Rocks to the pretty Maughold countryside, there is no better way to appreciate the Isle of Man's beautiful scenery.
- The line is built to 3 ft gauge and is 17 miles (27.4 km) long. It is electrified using overhead line at 500 volts.
- Originally the service was provided by about two dozen electric tramcars and the same number of trailers, the earliest of which date from 1893 and almost all of which pre-date 1910.
- Two of the original three cars that opened the line in 1893 are still in use, and are the oldest electric tramcars still at work on their original line anywhere in the world. The design of Manx tramcars pre-dates any consensus on tramcar design, and as a consequence they have quite distinctive boxy bodies.

## THE LAXEY WHEEL

The Laxey Wheel (also known as Lady Isabella) is the largest waterwheel in the world. Designed by Robert Casement, it is 22 metres in diameter and revolves at about 3 rpm. It was built in 1854 to pump water from the mineshafts and named "Lady Isabella" after the wife of the island's governor at that time. Most of the wheel and rod is made of wood; however, key mechanical parts are metal to provide tension and bearing surfaces. Climb the spiral staircase to the top of the Wheel for breathtaking views across the valley.



## Thursday 9<sup>th</sup> July 2009

8.00am – 9.00am	Breakfast in Barrovian Hall
10.00am	Host Family Day - You will be collected by hosts from the local Farming Community
6.00pm	Bar Opens in Marquee by King William's College Chapel. All return to King William's College with host families to enjoy a Barbeque of Manx Produce followed by Barn Dance with the Calor Gas Ceilidh Band.

---

## MANX MUSIC & DANCE

Music is a fundamental part of Manx life. With an abundance of live music events, the Isle of Man caters for fans of all genres of music, from classical and early music, to pop, jazz and blues. The Island also possesses its own indigenous music, generally referred to as Manx music, and includes folk song in both Manx Gaelic and English, instrumental session and ceili music. There are several annual Inter-Celtic music festivals held in the Island every year, including Yn Chruinnaght which attracts participants and visitors from the other Celtic Nations (Scotland, Ireland, Wales, Cornwall and Brittany) as well as Celtic cousins from as far afield as Spain, Canada and Australia.

Prior to the 15<sup>th</sup> century, little can be determined about the character of music on the Isle of Man. Songs from this era may have had Scandinavian origins, some also bear similarities to Irish and Scottish music. The song Reeaghyn dy Vannin (the Manx sword dance), is very similar to a lullaby from the Hebrides and is also said to have been a ritual dance during the Scandinavian era. The earliest written evidence describes fiddle music and later, a variety of folk dances including broadside ballads, jigs and reels which you have the chance to master tonight!

---

## Friday 10<sup>th</sup> July 2009

8.00am – 9.00am	Breakfast in Barrovian Hall
9.45am	General Assembly in Big School
1.00pm	Lunch in Barrovian Hall Afternoon at Leisure -Free time
7.00pm	Reception – Big School
7.30pm	Farewell Gala Dinner in Barrovian Hall followed by dancing in Big School
1.30am	Bar closes

---

## Saturday 11<sup>th</sup> July 2009

8.00am – 9.00am	Breakfast – Barrovian Hall followed by transfers to Airport/Sea Terminal
-----------------	--



# *Slane thiat*

*On behalf of the Isle of Man Conference Committee,  
we hope you enjoyed your visit to the Isle of Man.*

*Have a safe journey home, and come back and enjoy some more of the Isle of Man soon!*

Martyn Quayle, Chairman  
Angela Southern, Secretary  
Lynda Jones, Treasurer  
Gill Gelling, Vice Chair

Committee Members:

Paul Costain, David and Sarah Quayle, Richard Quayle, David Thompson

Our thanks and appreciation to all those who have helped in any way. Special thanks to the Isle of Man Department of Tourism and Leisure (Conference Organisers) for their support and assistance.





IFYE - PEACE THROUGH UNDERSTANDING

[www.ifye.co.uk](http://www.ifye.co.uk)

---

[www.visitisleofman.com](http://www.visitisleofman.com)